

**SKAGIT STREAM TEAM MONITORING STATIONS  
2021-2022**

**NO NAME SLOUGH (NN)**

**NN #1: Marihugh Road**

N. side of Marihugh Road. Middle of stream.

**NN #2: Marihugh Road at Bay View Edison Road**

Sample ditch on the E. side of Bay View Edison Road, N. side of Marihugh Road. Sample just upstream of culvert. Park on left, access the road from sampling site where the should widens at intersection.

**NN #3: Egbers Field**

South on Bayview Edison Road, left on Egbers-Kalso Rd to the end of dirt road to the field. Sample on SW – from the middle of the bridge.

**NN #4: Field Culvert**

South on Bayview Edison Road to turn-out to right at the second 90 degree turn out of Bay View. Top of the culvert on the West side, middle of the channel.



**BAYVIEW DRAINAGE (BV)**

**BV#1: Walker Road**

Go up Wilson Rd to Walker Rd intersection. Park in driveway of 12995 Josh Wilson and sample West side of driveway culvert.

**BV#2: C Street**

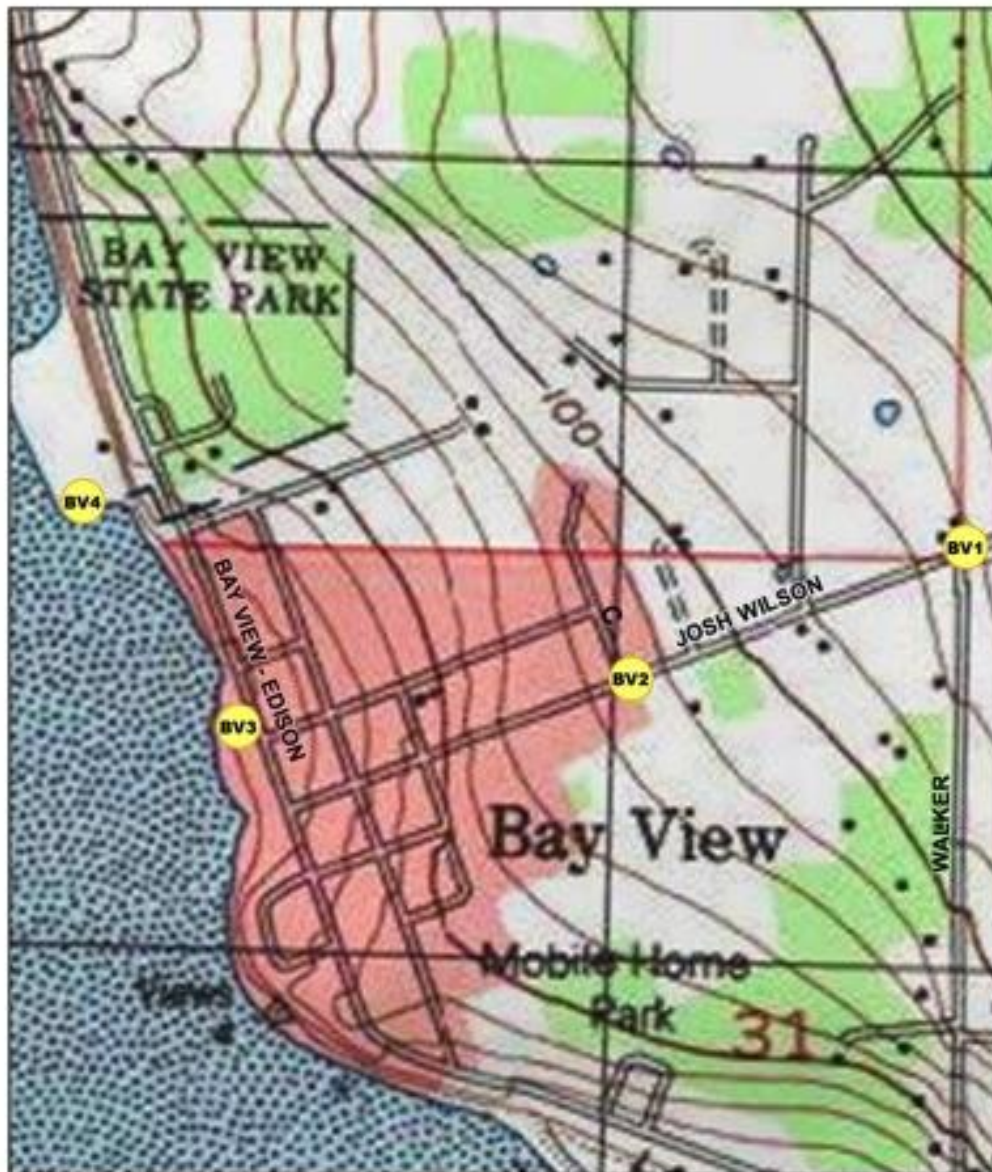
Turn and park off Wilson Road on C St. and sample West side of road culvert.

**BV#3: Boat Launch**

Sample middle of culvert where runoff enters Padilla Bay

**BV#4: Bayview State Park**

Park on SW corner of parking lot. Walk out towards rock jetty on SW corner and sample water from the beach S of the jetty.



**JOE LEARY SLOUGH (JL)**

**JL #1: Dahlstedt Road**

1.5 miles due west on Dahlstedt Road from District Line Road to a culvert crossing. Sample from top of culvert on South side of the road. When possible, sample after confluence of flow from East culvert.

**JL #2: HWY 99/Gear Road**

The bridge at the intersection of Old Hwy. 99 and Gear Road. Sample from south and west side of bridge.

**JL #3: Wilson/Avon-Allen**

The intersection of Avon-Allen and Josh Wilson Roads. Cross the road with extreme caution to southeast corner of intersection to sample from the culvert.

**JL #4: Tide Gate**

The tide gates at the mouth of Joe Leary Slough. Access via private property (Bill and Brenna Barr). Sample above first tide gate on the freshwater side of the tide gates.





## **UPPER SAMISH WATERSHED (US)**

### **US #1: Friday Creek @ Pomona Grange Park**

From I-5, take the Cook Road Exit and head east to the light. Turn left at the light onto Hwy 99 North. Follow 99 North to Pomona Grange Park on the right side. Park and walk into the park just beyond the picnic shelter to the creek.

### **US #2: Swede Creek @ Grip Rd**

From Station #1 (Friday Creek), head back down Hwy 99 South and turn left onto Prairie Rd. Follow Prairie Rd to Grip Rd and turn Right. Look for a gate on the left almost immediately. Park in front of the gate for the Tope Ryan Natural Area. The sampling site is on the same side of the road, just down by the Swede Creek sign.

### **US #3: Thomas Creek @ F&S Grade Rd**

From station #2, head back the way you came in on Grip Rd and back to Prairie. Turn left on Prairie Rd and follow for a short distance to F & S Grade Rd. Turn left onto F & S Grade Rd and follow it to where it crosses over Kelleher and where Collins Rd comes in. Look for a wide shoulder to pull over onto on the right side right before the orange GTE underground cable marker. **Cross the street to Thomas Creek for your 3<sup>rd</sup> sample.**

**US #4: Willard Creek @ 8274 F & S Grade Rd** From Station #3, continue heading south on the F & S Grade Road to 8274 F & S Grade Road, which will be on your right. Take sample from bridge.

## **LOWER SAMISH WATERSHED (LS)**

### **LS #1: Hwy 99 Bridge (over the Samish River)**

From I-5, take the Bow Hill exit and head east to the stop sign at Old Highway 99. Turn right on Hwy 99, driving south to the Samish River Bridge. Cross the bridge and look for the wide pull-out just on the south side of bridge. Park there. Go under the bridge to sample (SW corner of bridge).

### **LS #2: Samish River @ Jolly Road**

From Station #1, head back south on Hwy 99 until you reach Jolly Rd. Turn right onto Jolly Rd (on the west side of Old Hwy 99). Follow Jolly Rd straight ahead to the gravel WDFW parking area at the end (you will cross over Steelhead Ln). Park in the gravel. Head down the path and veer right for the easiest access.

### **LS #3: Thomas Road Bridge**

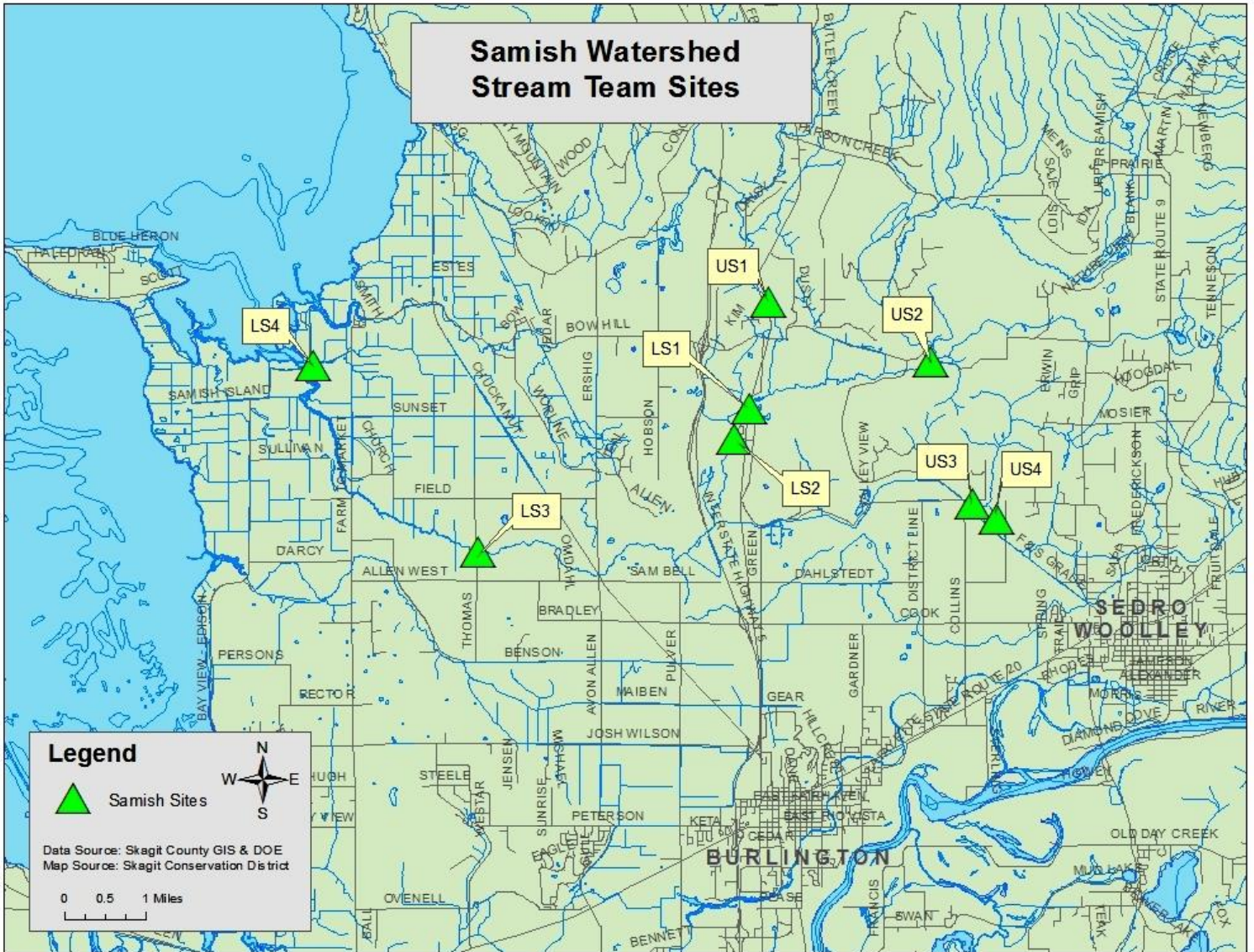
From Station #2, continue south on Hwy 99 to Cook Road. Turn right onto Cook Road. Follow Cook Rd to Chuckanut Drive. Turn right onto Chuckanut Drive and continue to Allen West Road. Turn left onto Allen West Road and follow to Thomas Road intersection. Turn right on Thomas Road and continue to the Samish River bridge. The sampling site is located at the S.W. corner under the bridge. At higher flows it is easier to get the samples from the north side of the bridge.

### **LS#4: Mouth of the Samish River (boat dock)**

From Station #3, continue on Thomas Road heading north. Turn left onto Sunset Road. Follow Sunset to Farm to Market Road. Turn right onto Farm to Market Road. Follow Farm to Market Road to Bayview Edison Road and turn left. Follow Bayview Edison Road - just before you go over the Samish River Bridge, turn right into the gravel parking area near the boat docks. Go in



the gate to the dock. Go left at the end of the ramp to the end of the dock. Take samples from there.





## **UPPER NOOKACHAMPS CREEK (UN)**

### **UN #1: North end of Lake McMurray**

From the Big Lake Grocery Store on HWY 9, continue south on HWY 9 until you get to the north end of Lake McMurray (approximately 5.5 miles). Turn LEFT on McMurray Shore Drive. Large sign for Lake McMurray Estates. A gate has been installed, but the site can be accessed by walking around the gate. Sample on the south side of the creek.

### **UN #2: North end of Big Lake**

From site 1, turn right back onto HWY 9. Travel approximately 5 miles north. Turn left at Lakeview Blvd (narrow residential road, curves to right at the lake). Sample site to left before bridge (across from big blue house). Take right path – sample below log wier.

### **UN #3: Otter Pond Road**

From Site 2, continue north on Lakeview Blvd. to the stop sign at the Big Lake Grocery Store. Turn right (head south) on HWY 9. Take first left onto Otter Pond Road (gravel road). Go 3/10 of a mile. Park at double gate on right. Sample from North East side.

### **UN #4: Knapp Road**

From Otter Pond Road, turn right (head north) on HWY 9 toward Big Rock. Travel about 2 miles to Knapp Road. Turn right. Nookachamps Creek crosses under the road just after you turn off of HWY 9. Sample the south east (upstream) side.

## **LOWER NOOKACHAMPS CREEK (LN)**

### **LN #1: College Way Creek**

From Skagit Valley College, continue east on college Way to the intersection with Martin Road and Waugh Road. Turn left on Martin Road. The creek crosses under Martin Road, just after you turn off College Way. Samples are collected on the upstream side.

### **LN #2: Highway 9**

From Martin Road, go east on College Way to the intersection with Highway 9 (Big Rock Store). Turn left (north) on HWY 9. Travel approximately 2 miles to where the east fork of Nookachamps crosses under the highway. Babcock Road will be on the left. There is a large turn-off area to park. The best access is from the northeast corner of the bridge.

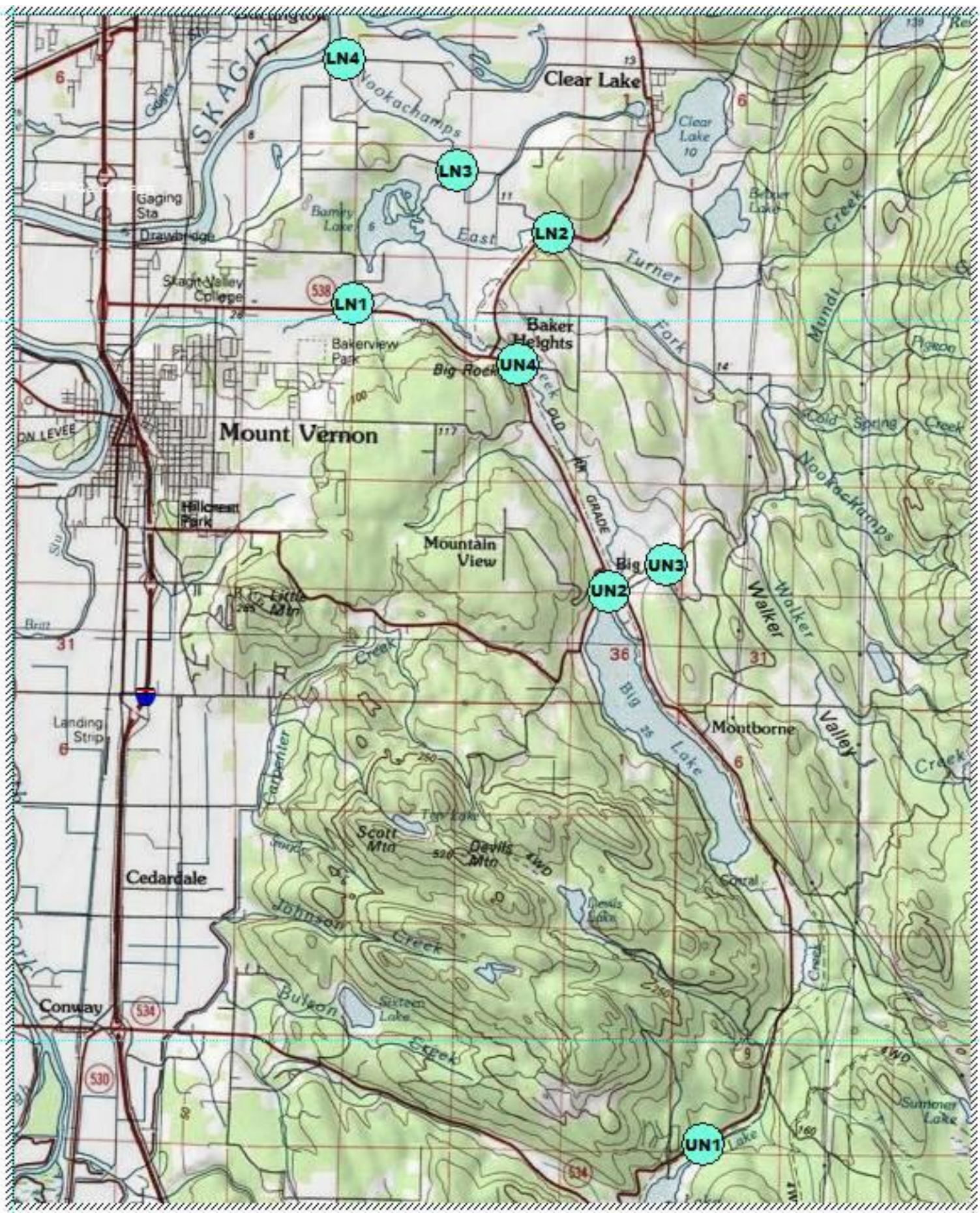
### **LN #3: Swan Road**

From the HWY 9 site, turn left onto Babcock Road. Follow Babcock until you get to the Swan Road – turn left. Stay on Swan Road until you get to where Nookachamps Creek crosses under the road. There is a small turn-off area at the southwest corner of the bridge. The best access to the creek is from the northeast corner of the bridge.

### **LN #4: Francis Road**

From the Swan Road site, continue west on Swan Road until it ends at Francis Road. Turn right onto Francis and head north. The road will make three 90-degree turns before you get to the site at the Nookchamps Creek stream sign. Sample on southwest corner of bridge.







## **KULSHAN CREEK (KC)**

### **KC#1: South Fork Kulshan – S. 14<sup>th</sup> Street**

From SCD office, turn right on College Way to stop light. Turn left (head south) on 18<sup>th</sup> Street. Turn right on E. Fir to 14<sup>th</sup> Street. Turn right on 14<sup>th</sup> and park in cul-de-sac. Walk to Kulshan Trail – head west on trail to sampling site on right.

### **KC#2: Main Stem Kulshan – Gentlemen Gene's**

From Site #1, turn left on E. Fir and left back to 18<sup>th</sup>. Turn left on Roosevelt and then left on Parker Way (to Gentleman Genes at 1400 Parker Way). Sample at drainage on same side of street at Gentleman Genes (east side of street).

### **KC#3: North Fork Kulshan**

Head north on Parker Way. At stop sign, turn LEFT (west) onto Roosevelt. Park in the Northwest Eye Surgeons parking lot at 1306 Roosevelt. Notice line of cottonwood trees on the north side of the road. The sampling site here is west of the Business Center and directly south across the road from the cottonwoods.

### **KC#4A: Main Stem Kulshan @ Habitat for Humanity, 1022 Riverside Drive**

Continue west on Roosevelt to next intersection. Take right (north) on Continental. At light, turn left onto College Way. Take left at light onto Riverside Drive. Proceed south on Riverside Drive past ACE Hardware and County Motors (all on your left). Turn LEFT into Habitat for Humanity Parking lot, 1022 Riverside. Drive through parking lot to gravel area. Sampling site is at creek by railroad track bridge.

### **KC#5: Main Stem Kulshan @ mouth**

Take right onto riverside when leaving Country Motors. Go left on College Way. Proceed to Freeway Drive. Turn left (heading south) on Freeway Drive just past Blade's Chevrolet. There is small parking lot just south of Blade's or continue about 2 "blocks" south and there is a small turn out near the trail for parking. Walk to the fish ladder with a salmon stream sign. Sample from middle tank if possible.

### **City of Mount Vernon Wastewater Treatment Plant (1401 Britt Road):**

Continue south on Freeway Drive. Go through old Mount Vernon (Freeway Drive turns into 1<sup>st</sup> Street as you go by the Food Co-op and then to Cleveland as you continue south through town). At the Senior Center (on Cleveland), turn right on Hazel and go WEST toward the dike. Follow the curve to the left – the road name turns into Britt Road. The City Wastewater Treatment Plant will be on your right (1401 Britt Road).





## **TRUMPETER BASIN (TB)**

### **TB#1: Stonebridge Community (Logan Creek Upstream)**

From SCD office, turn left on College Way to stop light. Turn right at stop light on LaVenture. Turn left on Alison, right on Shady Lane and left on Stonebridge to bridge.

### **TB#2: College Way Station (Logan Creek Downstream)**

From site #1 head back to LaVenture and head north to College Way. Turn right on College Way to private residence at 3617 East College Way (Richard Frazier residence on north side of street). Park just east of residence by the coffee shop parking lot.

### **TB#3A: College Way across from Summersun Nursery (Trumpeter/Thunderbird confluence)**

From Site #2 head east on College Way to the confluence of Trumpeter and Thunderbird, which is directly across the street from the old Summersun Greenhouse Nursery (sampling location on your right). Turn right into next side street to park.

### **TB#4: Kiowa (Thunderbird)**

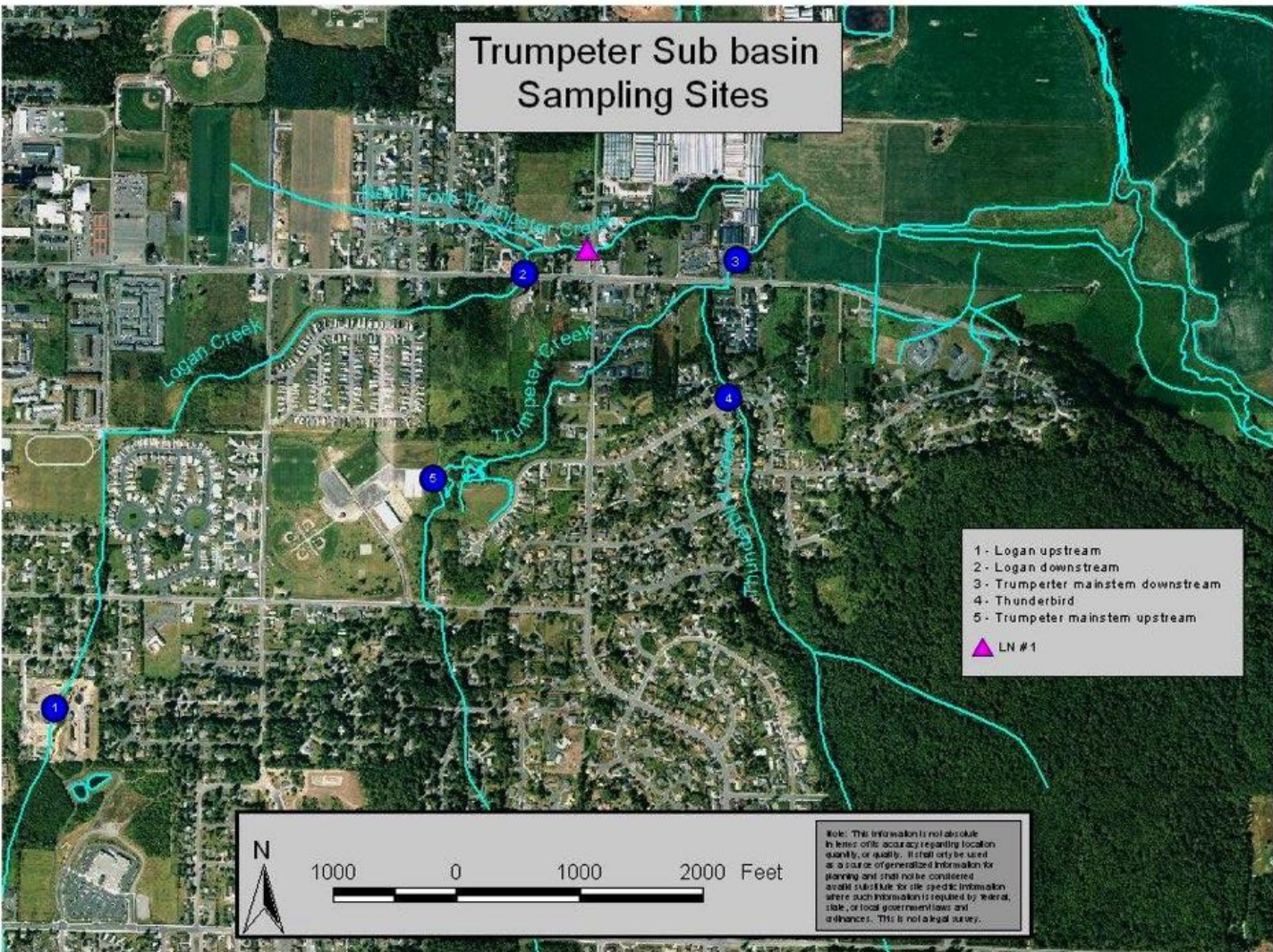
From Site #3, head back west on College Way to Waugh Road. Turn left on Waugh. Follow Waugh to Apache and take a left. From Apache turn right on Kiowa. Look for Thunderbird Creek Salmon sign.

### **TB#5: Bakerview Park (Trumpeter)**

From Site #4, head back to Waugh Road and turn left on Waugh. Turn right on Fir Street and follow to Bakerview Park. Turn right into first park entrance and park by skateboard area (east side parking lot).

**City of Mount Vernon Wastewater Treatment Plant (1401 Britt Road):** Turn right on Fir when leaving park to N 18<sup>th</sup>. Left onto N. 18<sup>th</sup>. Right onto Blackburn. Continue W on Blackburn, crossing RR tracks, thru light. W to Britt Slough Rd. WW Plant on right.

# Trumpeter Sub basin Sampling Sites



## **GAGES SLOUGH (GS)**

The kit will be available for pick-up at the Burlington Sewer Department and Wastewater Treatment Facility —900 S. Section Street, Burlington. (This was pre-covid) Current location is held at Gil Ormbrek's home.

The current team does this route out of order for convenience and starts at GS #3A.

**GS #1 - Regent St, and E. Rio Vista Ave:** From site GS #3A, head south on N. Section St. and turn right on Rio Vista Ave. and drive until you see Regent St. on the right. Turn left down the roadway between house number 1000 and 926 Rio Vista Ave. The sample site is down the bank between the two houses.

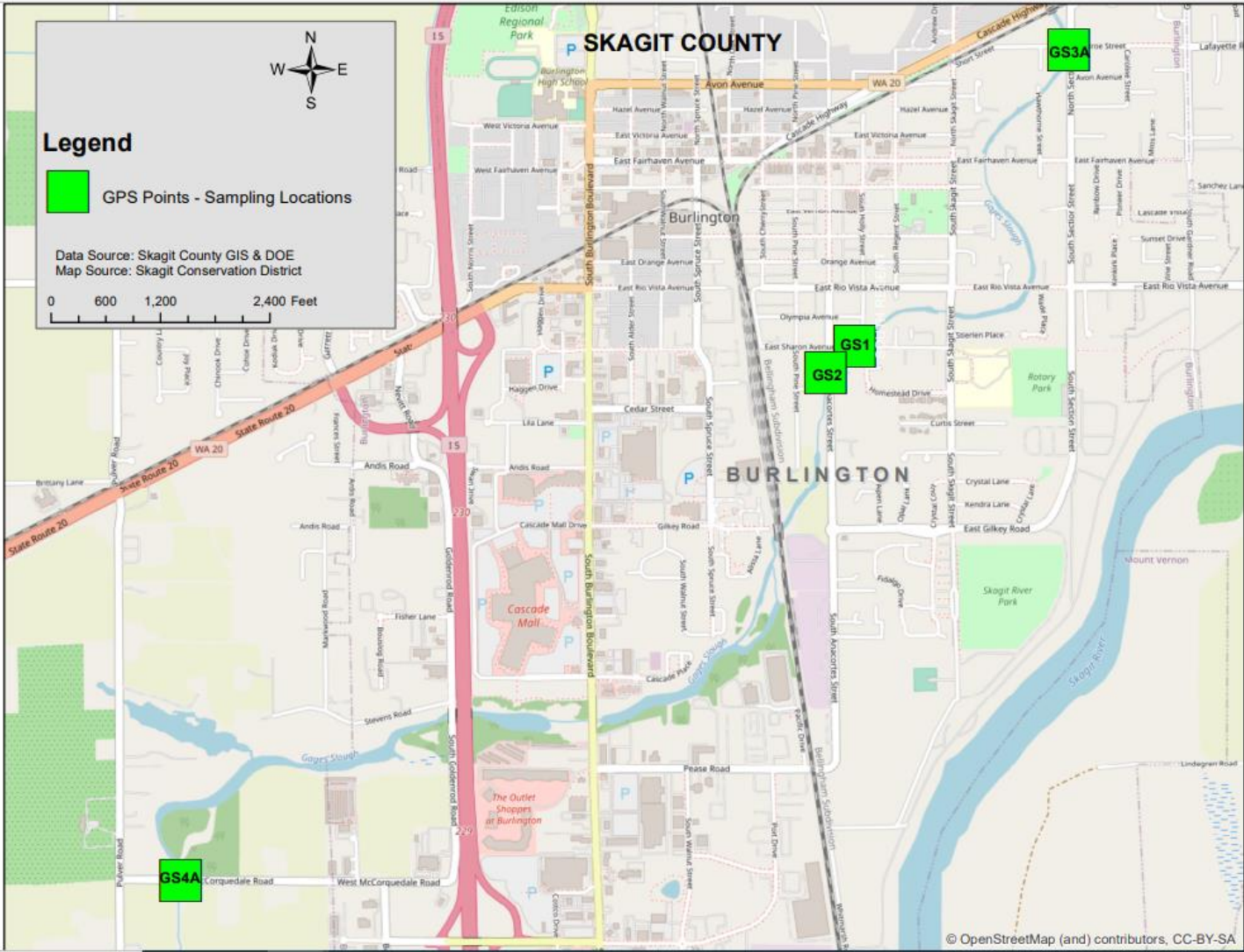
**GS #2 - S. Anacortes Street:** From site GS #1, head west on E. Rio Vista Ave. and turn left on S. Anacortes St. Continue south until you reach the bridge where the slough runs under the road. This is also where the bike lane begins on the east side of the street. The sample site is on the northwest side of the road next to the driveway.

**GS #3A – N. Section and Monroe Streets:** This site is typically done first using bottle GS #3A. From the Burlington Treatment Facility, head north on S. Section St. to Monroe St. on the left near Hwy 20. The sample site is on the southwest corner of N. Section and Monroe Streets. Please go to GS#1 and continue from there.

**GS #4A - McCorquedale:** From site GS #2, head south on Anacortes St. and cross RR tracks. Take a left on Port Drive and follow it through the round-about and strait to the light. Which becomes George Hopper Rd. Go over the freeway to Bouslog Rd. and take a right. Continue north to McCorquedale Rd. and take a left. Gages Slough crosses the road about half way down at the guard rail. The sample site is on the south side of the road.

**Lab:** From Site GS #4A, go back the way you came to George Hopper Road and turn left. Continue east on George Hopper across Burlington Blvd. and continue on to Pease Road. Turn left and cross over the RR tracks, after curve the road becomes Anacortes St. Continue on to E. Gilkey Road and turn right. Continue on E. Gilkey crossing over S. Skagit and continue around curve. The road then becomes S. Section St. The Burlington Waste Sewer Department Lab is on the right at 900 S. Section St. Sample bottles and field sheet are to be left outside of the lab and new bottles picked up.





**Legend**

GPS Points - Sampling Locations

Data Source: Skagit County GIS & DOE  
Map Source: Skagit Conservation District

0 600 1,200 2,400 Feet



## **Ace of Hearts and Happy Valley Creeks**

### **Site 1 Heart Lake Trail**

From the Anacortes Wastewater Treatment Plant, drive south on Commercial Ave. or R Ave. to 32<sup>nd</sup> Street. Turn right (west) onto 32<sup>nd</sup>. Turn left (south) at the stop sign on H Ave, which becomes Heart Lake Road. Park at the Heart Lake trail pull-off, right side of road. This is the first parking area after entering the forestlands. Walk down ACFL trail 23 to beginning of Ace of Hearts Creek. Sample from tiny footbridge.

### **Site 2 H Ave. and 41<sup>st</sup> St.**

From Site 1, drive back north on Heart Lake Road. Turn right onto 41<sup>st</sup> St. and park immediately on the right near the intersection. Cross diagonally to NW corner of the intersection and sample from foot-bridge just north of 41<sup>st</sup> St. in the new restoration area.

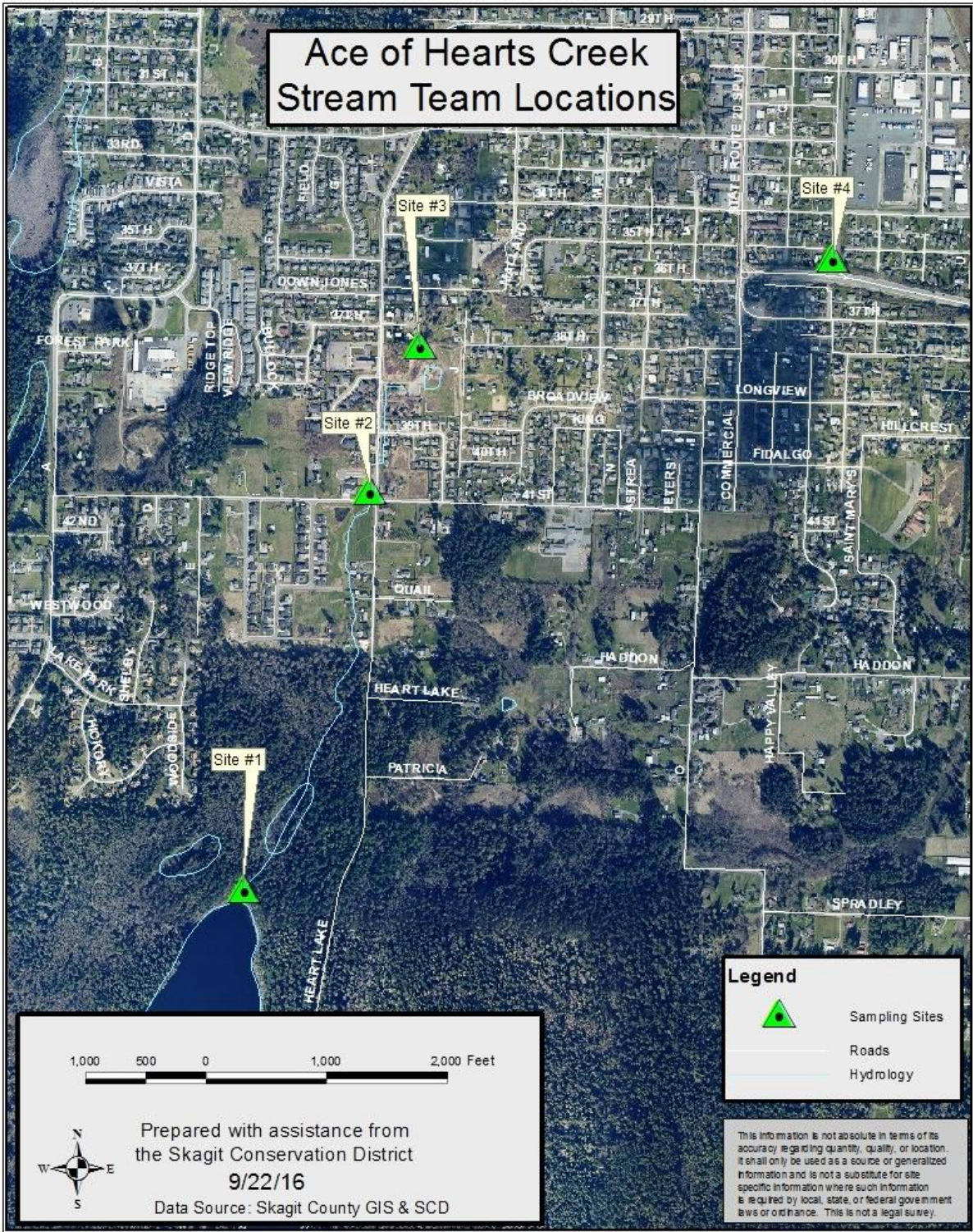
### **Site 3 Rotary Dog Park**

U-turn and return to H Ave. Turn right into Ace of Hearts Rotary Dog Park. Park at the left end of the parking area, and walk west to stream. Sample the confluence of 2 culverts.

### **Site 4 Happy Valley Creek**

Continue north on H Ave to 32<sup>nd</sup> St. Turn right on 32<sup>nd</sup>. Cross Commercial Ave. Take first right, and then left onto 35<sup>th</sup> St. Drive east and park at cul-de-sac. Mowed path to the right (south) leads to the creek.

# Ace of Hearts Creek Stream Team Locations



1,000 500 0 1,000 2,000 Feet



Prepared with assistance from  
the Skagit Conservation District  
9/22/16

Data Source: Skagit County GIS & SCD

**Legend**

-  Sampling Sites
-  Roads
-  Hydrology

This information is not absolute in terms of its accuracy regarding quantity, quality, or location. It shall only be used as a source or generalized information and is not a substitute for site specific information where such information is required by local, state, or federal government laws or ordinance. This is not a legal survey.